



Child and Age-friendly Communities:

Linking ECE to the Economy and Broader Society

Presentation to Head Start Conference

Washington, DC

July, 2014

Mildred E. Warner

Department of City and Regional Planning, Cornell University

www.mildredwarner.org/planning | mew15@cornell.edu

Funding provided by the USDA
National Institute for Food and Agriculture

The Economic Importance of Early Care and Education

Children - Human development

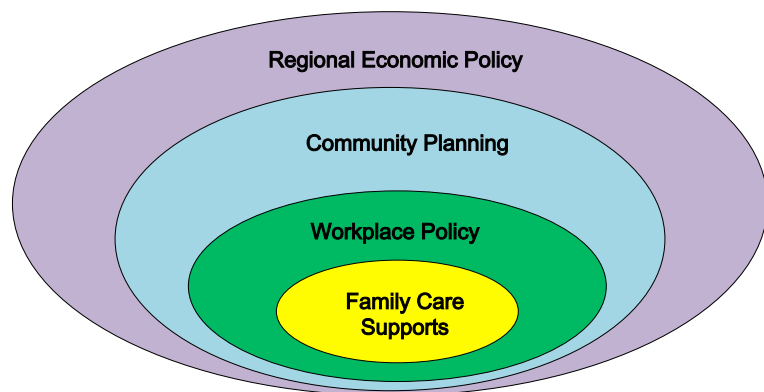
Parents – Labor mobilization, career ladders

Workers – Better wages and working conditions, career ladders

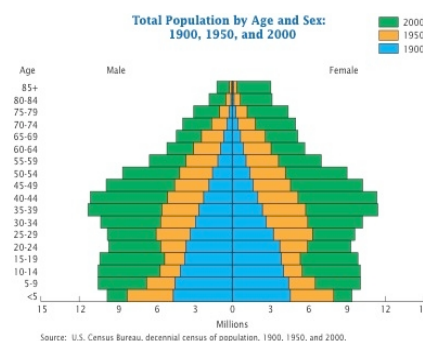
Regions– Critical social infrastructure for economic development



We Need a Comprehensive Approach to Economic and Community Development



Aging Population Creates Care Needs At Both Ends of the Life Cycle



The Promise of Multi-generational Planning



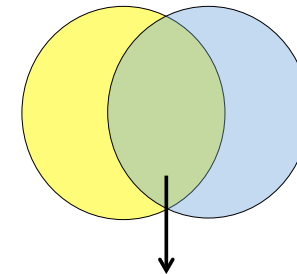
5

Core Principles



Child-Friendly Cities

Basic Services
Safe Water
Safe Streets
Opportunity to Play
Civic Participation
Family Support
Protection from Exploitation



Many Common Elements



Age-Friendly Cities

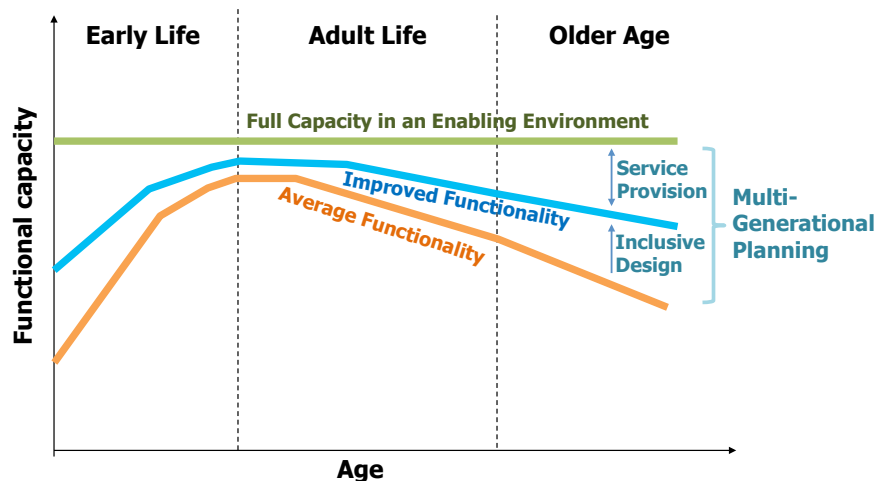
Housing
Transportation
Services (Health)
Outdoor Spaces
Communication
Civic and Social Participation
Respect

6



A Framework for Multigenerational Planning

The link between design and services



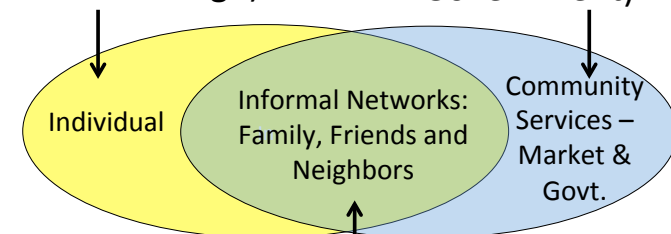
Source: Author based on WHO, Global Age Friendly Cities, 2007



Three Challenges for Planning

Foster Individual Independence (Inclusive Design)

Promote Community Services (Market and Government)

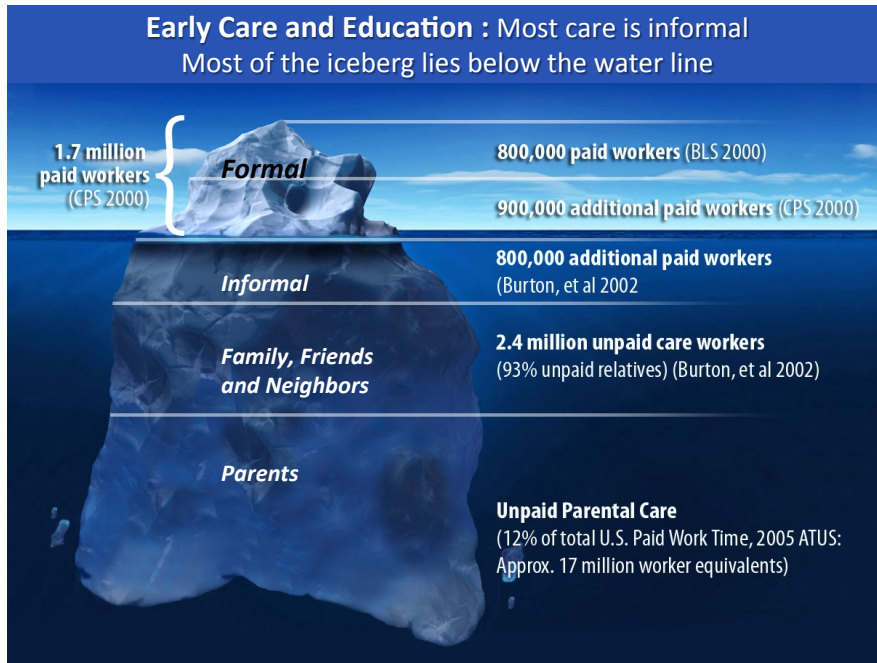


Support Informal Networks

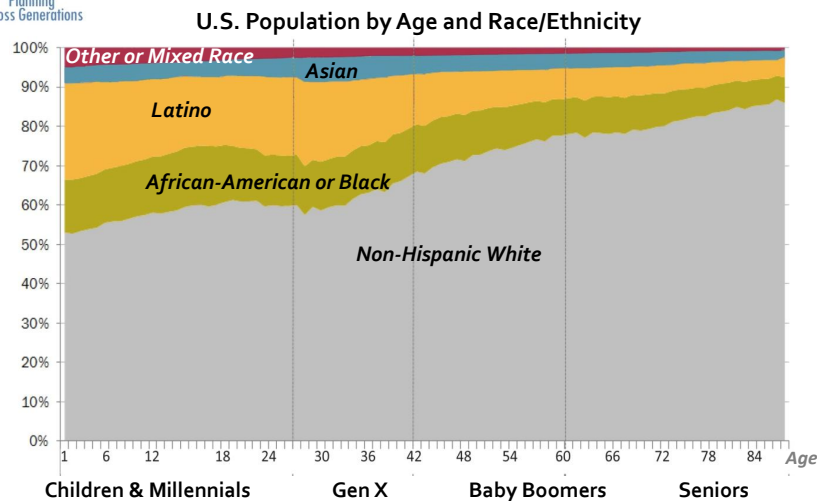
How do we proceed?

- Build Coalitions
 - across age groups
 - with planners and developers
- Innovations in Planning and Service Delivery

10



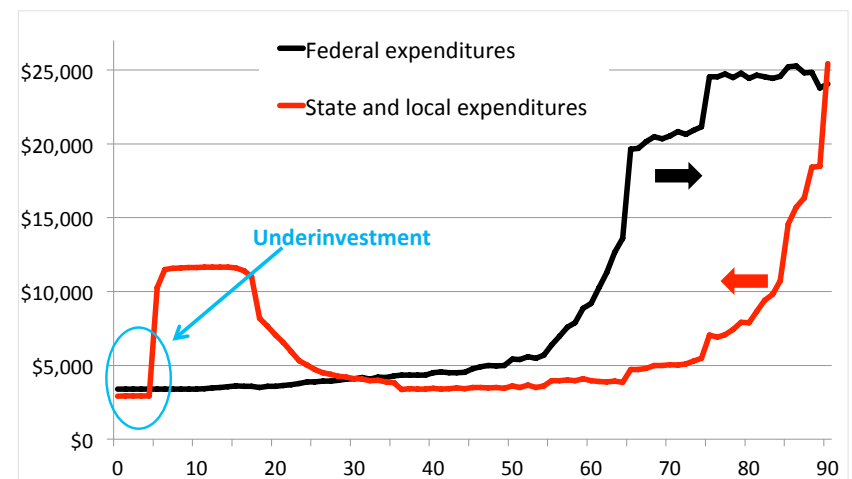
Diversity and the Need for a New Social Compact



PolicyLink. 2011. "The Changing Face of America: Demographic Change and the New Policy Agenda." Presentation by Manuel Pastor at PolicyLink Equity Summit, 2011.

11

Government Spending by Age (2004)



Based on estimates by Edwards, Ryan D. 2010. Forecasting Government Revenue and Expenditure in the U.S. Using Data on Age-Specific Utilization, Working Paper no. WP10-01.

12



Community Planning and Service Delivery



- Surveyed attitudes, actions, zoning and planning
- 2013 Planning Across Generations Survey, 1478 city managers
- 2008 Family Friendly Planning Survey, 944 planners
- 2010 Maturing of America Survey, 1414 city managers
- Data tables that follow show % responding yes to question

13

Most trusted institutions used for information and service delivery

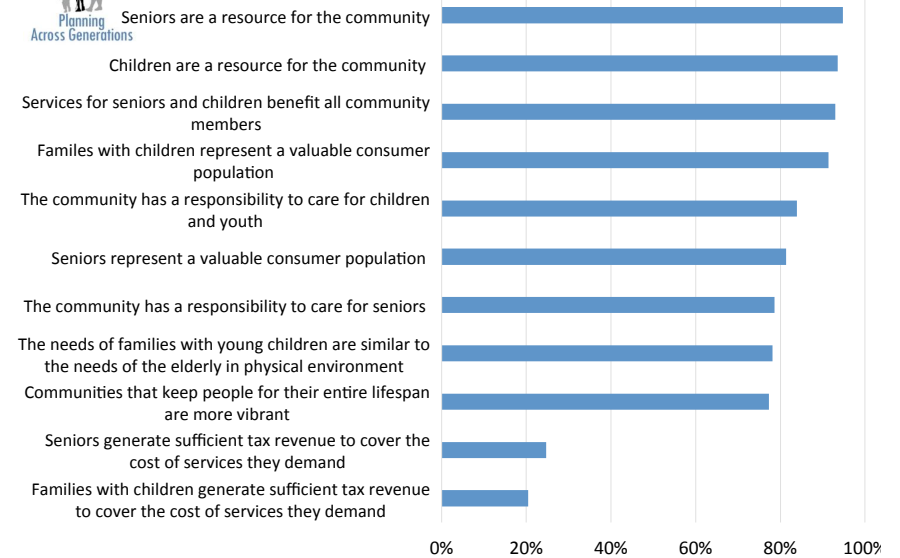
Trusted Institutions	Most trusted by..		Used for information & service delivery
	Seniors	Families with children	
Schools	8%	99%	74%
Employers	51%	88%	39%
Fire department	92%	86%	75%
Police	92%	84%	80%
City/county information and referral services	95%	82%	-
Community nonprofits	92%	81%	74%
Local retail providers	87%	79%	45%
Religious institutions	96%	74%	42%
Health care providers	96%	73%	40%

ICMA Planning Across Generation Survey, 2013 (1,478 city managers responding)

15



Attitudes Toward Multi-generational Planning

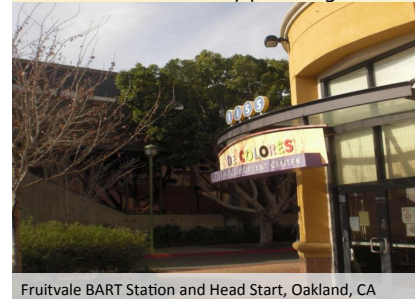


ICMA Planning Across Generation Survey, 2013 (1,478 city managers responding)

14

Education – Shared Services

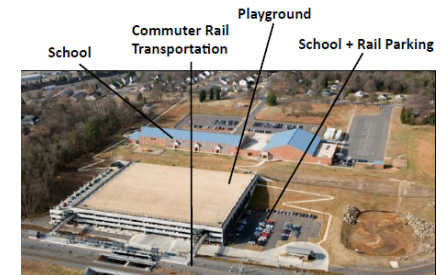
- Joint use agreements **56%**
- Childcare services **50%**
- Participate in school district educational facility planning **28%**



Fruitvale BART Station and Head Start, Oakland, CA

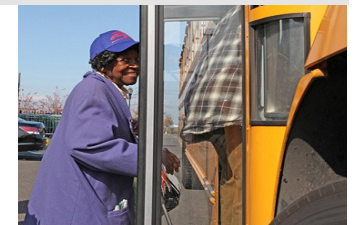


LongView Retirement Community + child care program in Ithaca, NY

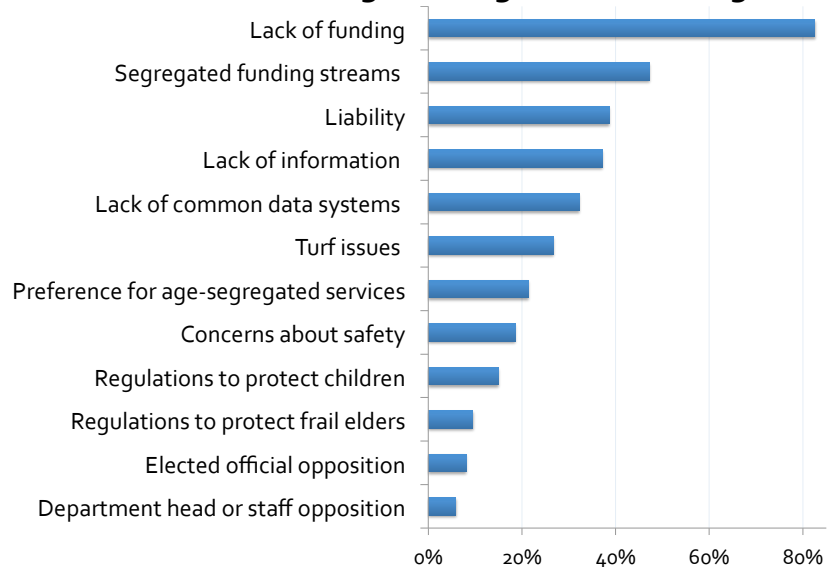


In Charlotte, NC, the community built a school, light rail station for commuters, and parking for both (with a playground atop the parking garage).

Seniors can ride school buses to the supermarket through Age-Friendly NYC. Photo: Getty Images, NYC
10% of communities do this nationwide.



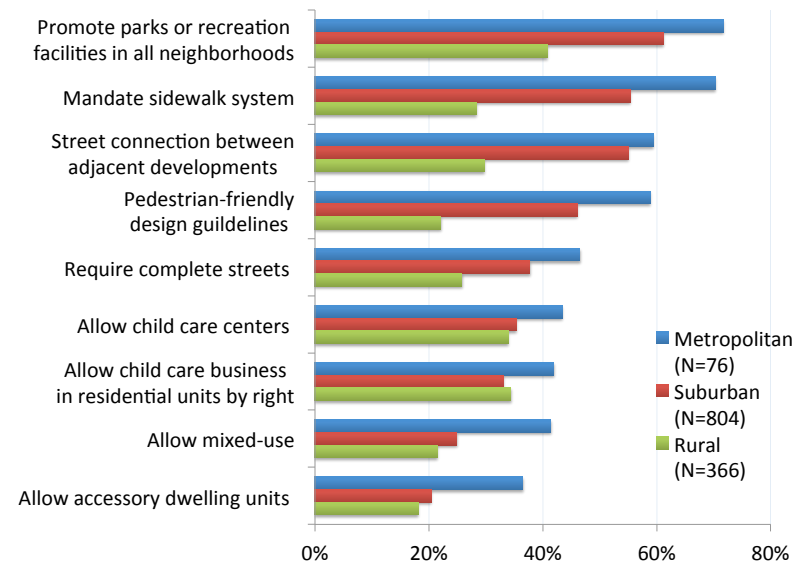
Barriers to Joint Programming for Different Ages



ICMA Planning Across Generation Survey, 2013 (1,478 city managers responding)

17

Built Environment: Planning regulations in communities



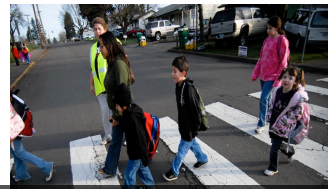
ICMA Planning Across Generation Survey, 2013 (1,478 city managers responding)

18



Housing

- Family-sized housing (2+ BR) 75%
- Affordable housing 28%
- Accessory dwelling units 21%



Transportation & Mobility

- Sidewalks 48%, Bike lanes 7%
- Walk-to-school programs 34%
- Complete streets 17%



Child Care

- Adequate supply of child care 50%
- Family home child care by right 35%

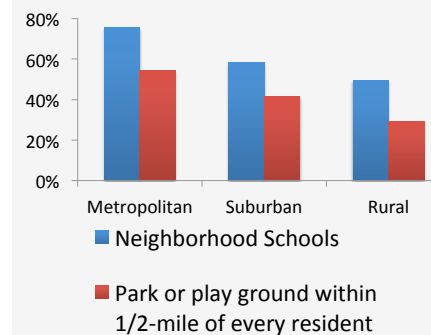


Mixed Use Development

- Allow mixed use 25%
- Require parks/playgrounds 56%

19

Park Access



Solutions

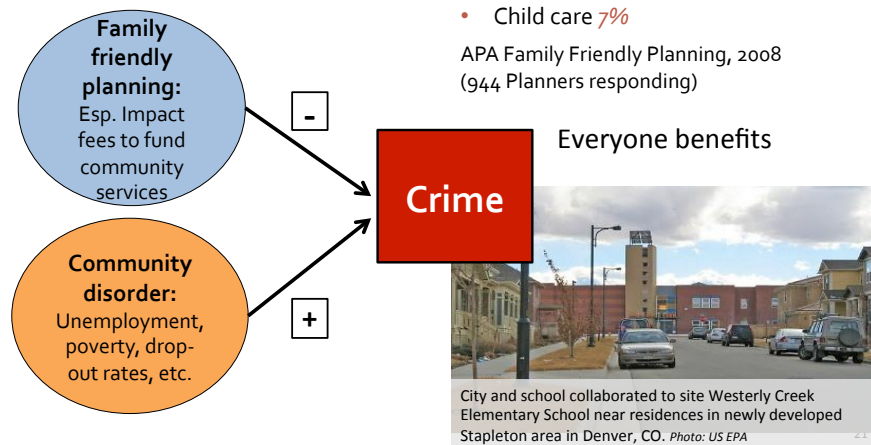
Tucson Schoolyard Parks

- Identified need through City-led "playspace audit"
- Clear, specific goal: every resident within ½ mile of park
- Elected officials championed the issue
- Overcame security/liability concerns
- City attorney helped craft agreement
- Police department officially involved
- Low cost



20

Warner, M.E. & J. Rukus, 2013. "Crime Rates and Collective Efficacy: The Role of Family Friendly Planning," *Cities*.



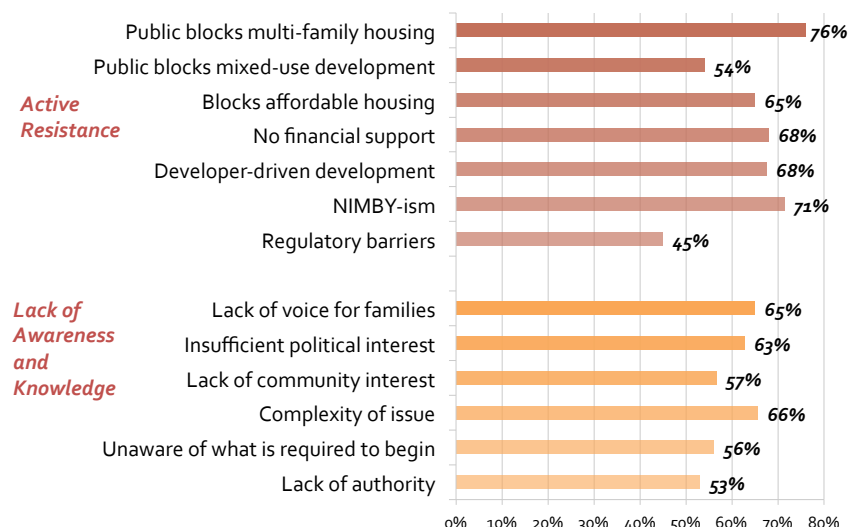
Finance with new partners :
Developers, Police

Use impact fees to subsidize...

- Parks & recreation facilities **45%**
- Schools **22%**
- Transit **16%**
- Child care **7%**

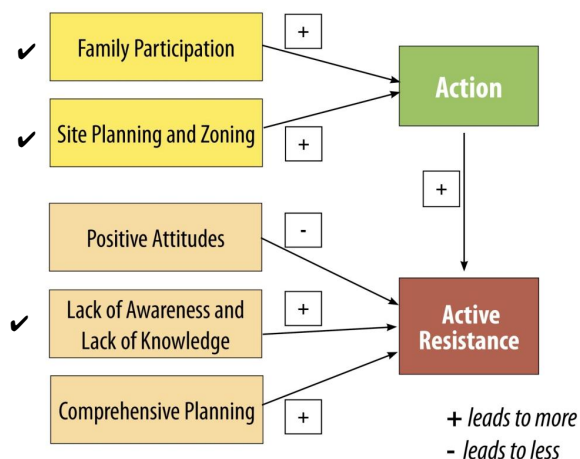
APA Family Friendly Planning, 2008
(944 Planners responding)

Barriers to Building Multi-Generational Communities



Source: APA Family Friendly Planning Survey, 2008, (944 planners responding)

Planning Leads to Action, Ignorance Leads to Resistance



Key variables from regression results.

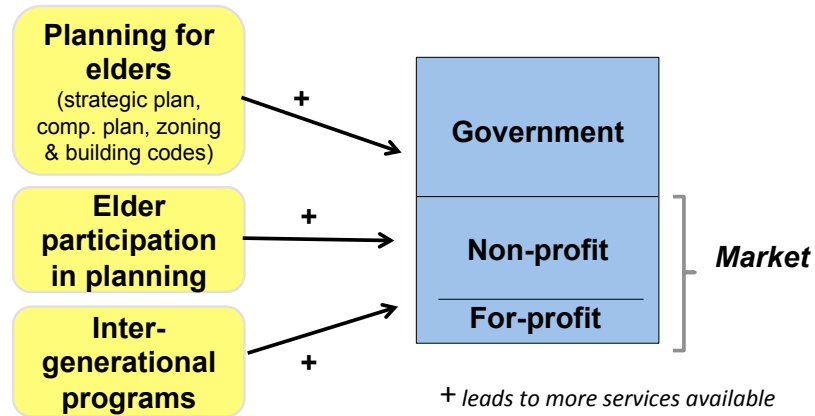
Warner, M.E. and J. Rukus (2013), Planners' Role in Creating Family Friendly Communities: Action, Participation and Resistance, *Journal of Urban Affairs*



Similar Results Found in Survey on Services for Seniors

- **2010 Maturing of America Survey**
 - Conducted by ICMA for National Assoc. of Area Agencies on Aging, APA, NLC, NACO, Partners for Liveable Communities. Funded by MetLife
 - 1,414 cities and counties across the US
- Measured **41 services for seniors** (housing, health, workforce dev., transportation, nutrition, recreation, civic engagement) **Average** municipality provides **23 services**
- ◆ Measured **7 planning actions** for aging in place
- ◆ Measured **elder participation** in the planning process and **inter-generational programming**

What leads to higher service levels?



Both a government and a market response

Results controlled for population, poverty, metro status, government finance and council manager government. Avg. service level, 23 services

25

A Strategy for the Future



Issue Briefs:

- Joint Use with Schools
- Health Impacts
- Rural Differences
- Gender Concerns
- Informal Networks
- Child Care

Contact:

www.mildredwarner.org/planning
| mew15@cornell.edu

Funding provided by the USDA National Institute for Food and Agriculture

26