



Aging as a Framework for Livable Communities: Putting People into Planning

**Deborah Howe, PhD, FAICP
Professor and Chair
Dept. of Community and Regional Planning
Temple University**







Personal Changes with Age

- Strength, agility, fine motor control
- Vision
- Hearing, taste, smell and skin sensitivity
- Flexibility, reaction time
- Mental health
- Dementia

US Population Age 65+

1900	3.1	Million
1950	12.3	Million
2000	35.0	Million
2030	72.0	Million
2050	86.7	Million



US Population 85+

1900	123	Thousand
1950	577	Thousand
2000	4.2	Million
2030	10	Million
2050	21	Million



Need for Daily Assistance by Age

65-69	9.2%
70-74	11.0%
75-79	19.5%
80-84	31.2%
85+	49.5%



Options for Family Support

For women ages 40-44

1976—10% childless, avg. of 3.1 children

2002—18% childless, avg. of 1.9 children



2010 Costs of Care

- Nursing homes
 - \$205 daily for semi-private rooms
 - \$74,825 annually
- Assisted living facilities
 - \$3,293 per month
 - \$39,516 annually



Additional Issues

- Impact of economic decline
- Impact of fuel costs
- Crossover point in housing market



Housing Location and Type for Older Adults

- 1/2 in suburbs; by 2030—8/10
- 1/4 in rural areas
- 3/4 in single detached homes with 1700+ sq. ft. on 1/3 acre lots

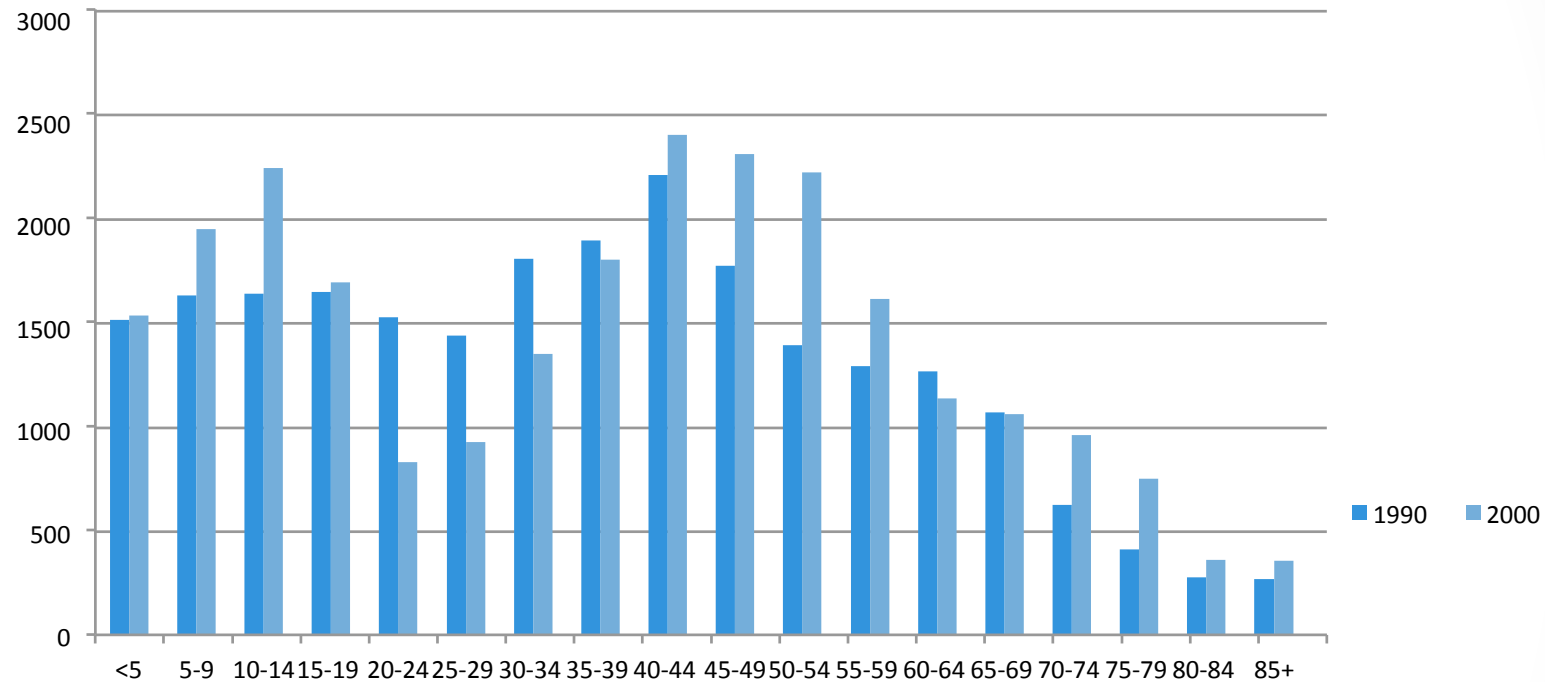
Living Arrangements

- 10.5 million, 29% of all seniors lived alone
- For those 85+, 37% of men and 57% of women lived alone
- Ownership rates over 80%
- Median duration in home—25 years

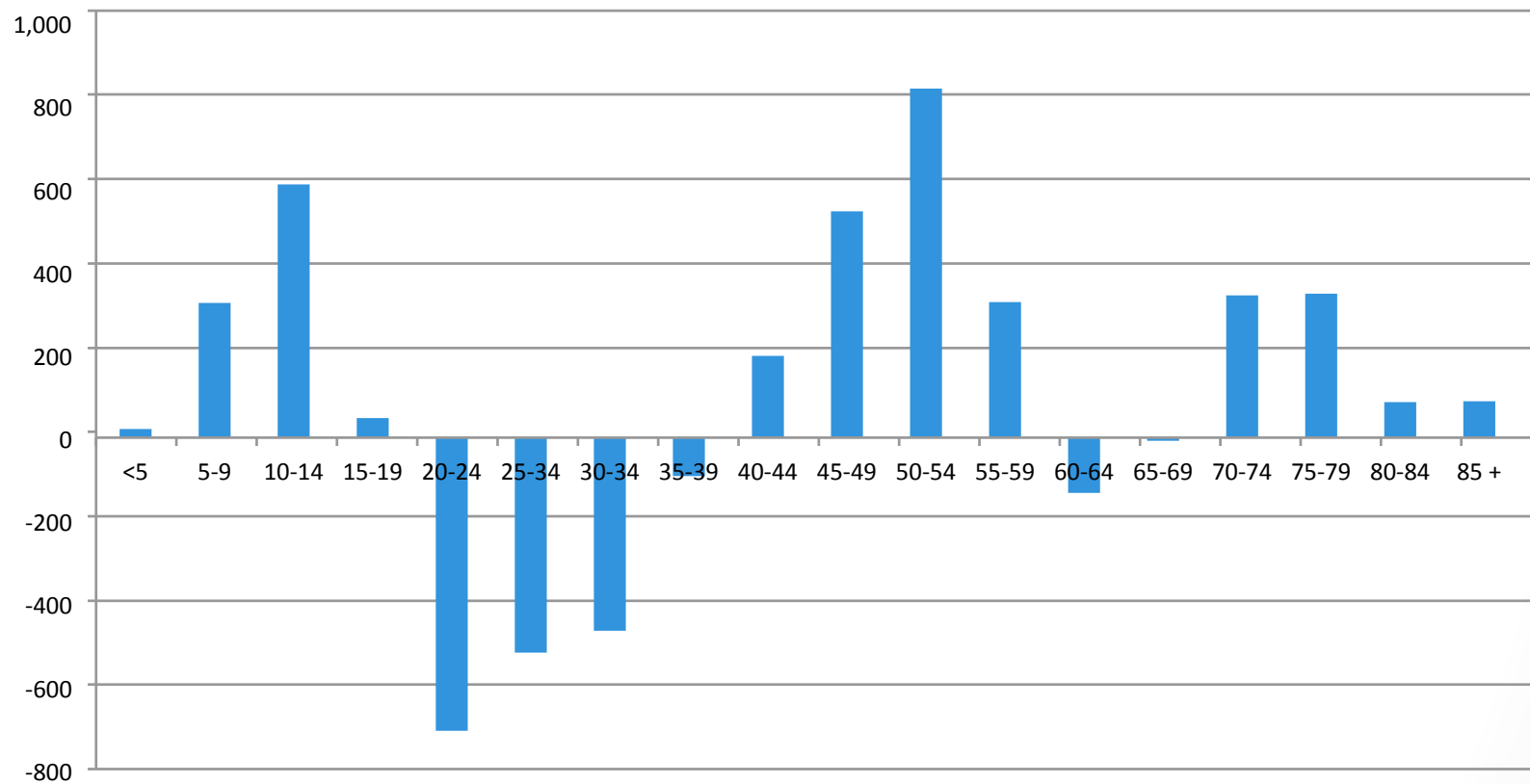
Defining Local Aging Issues: Case Study of Upper Dublin, PA



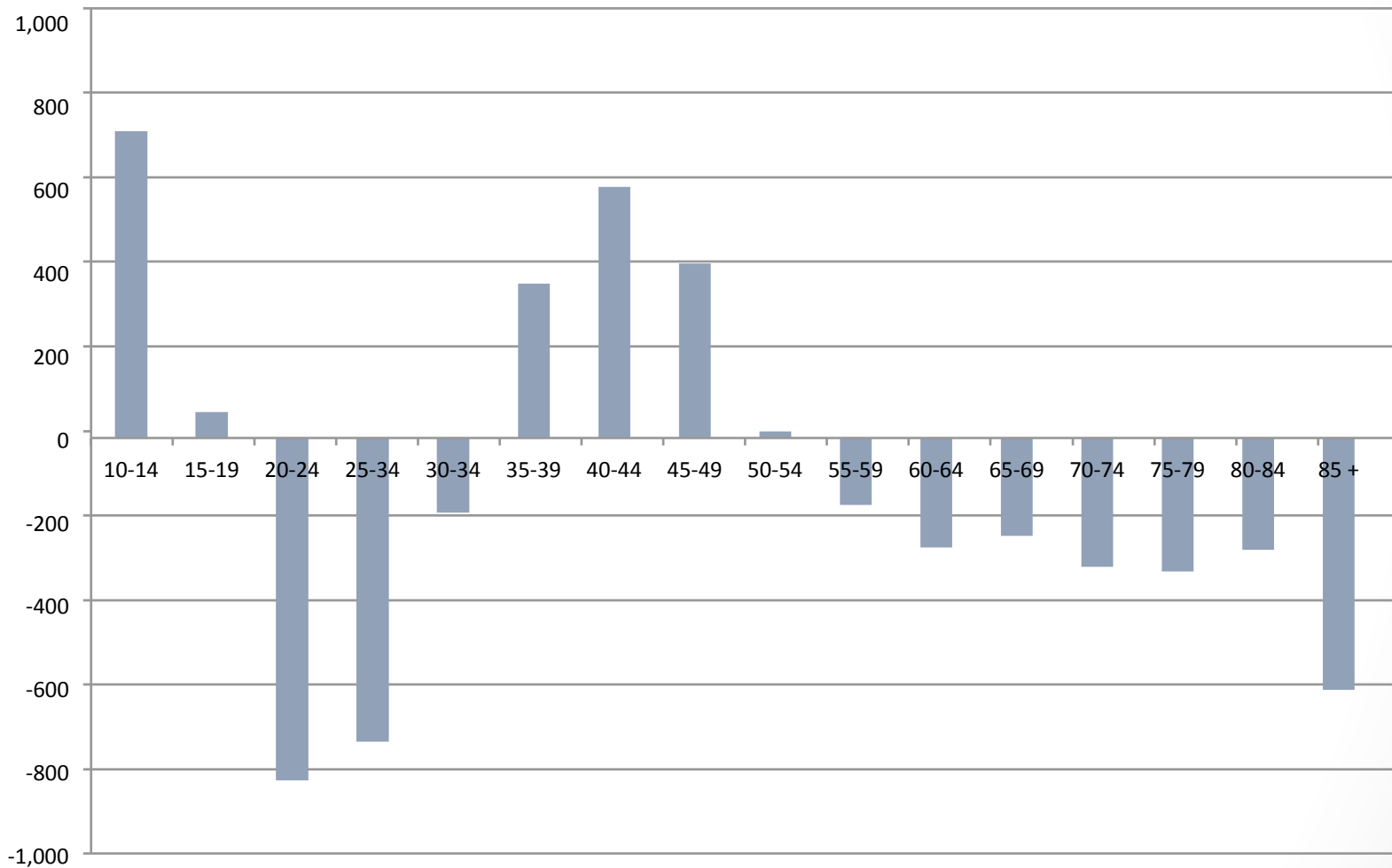
Comparison of 1990 and 2000 Age Distributions



Differences Between 1990 and 2000 Age Distributions



Differences Between Aged 1990 and 2000 Age Distributions



Other Demographic Data (2000)

- Owner-occupied units—88.8%
- 1-unit detached housing—74.2%
- 1-unit attached housing—14.7%
- Median rent--\$890
- Households with member age 65+—24.9%
- Population age 65+ with disability—28.1%
- Lived in unit more than 20 years—26.8%

Housing Alternatives



Access



Visitability





Universal design





Accessory Dwellings







Before



Done



Mixed Use development



Mobility Issues for Seniors

- 15 times more likely to be killed as pedestrians than as drivers
- Pedestrians—1/5 of road users, 1/2 of deaths
- Driving may be only option when walking and transit use become more difficult
- By 2030—1/4 drivers will be age 65+











Aging oriented planning approaches

- Elder friendly communities
- Aging friendly communities
- Communities for all ages
- Aging in place initiatives
- Community certification
- Lifecycle communities

Resources

AARP Public Policy Institute

Livable Communities: An Evaluation Guide

*Beyond 50.05, A Report to the Nation on Livable Communities:
Creating Environments for Successful Aging*

Aging in Place: A State Survey of Livability Policies and Practices

<http://www.aarp.org/research/ppi/>

National Association of Area Agencies on Aging, Partners for Livable Communities, and MetLife Foundation

A Blueprint for Action: Developing a Livable Community for All Ages

<http://www.aginginplaceinitiative.org/>

Contact Info

Mildred E. Warner, PhD

Cornell University

mew15@cornell.edu

<http://economicdevelopmentandchildcare.org>

Deborah A. Howe, PhD, FAICP

Temple University

dhowe@temple.edu